

High Street, Starbeck, Harrogate

Starbeck HISTORY Trail

49593. (J.V.)

Route and Notes by Stephen G. Abbott

Available free of charge at Starbeck Library, St Andrews Church and Starbeck Methodist Church

Starbeck History Trail

Our Journey begins at **(1)** the public library that was built in 1888 and functioned until 1931 as the local Wesleyan Methodist chapel. Walk from here to the High Street. Look across the corner of the playing field and note **(2)** St Andrews Church, this was built in 1910 to replace a smaller chapel (1889-1909)

Now turn left and head towards Forest Lane Head. You will soon pass **(3)** the Methodist church of 1931, this was one of the first in the country to amalgamate Wesleyan and Primitive Methodists.

Walking on we pass **(4)** the school which opened in 1896 to satisfy the needs of a rapidly growing community. Further on we pass **(5)** Clematis Lodge; this square built cottage dates from the 17th century and is the oldest remaining building in Starbeck. At the junction with Bogs Lane we see **(6)** the 18th century Toll House, a relic from the days of turnpike roads.

Turning down Forest Lane we see **(7)** a stone horse trough that was donated by Elizabeth Holroyd of Forest Villa in 1895.

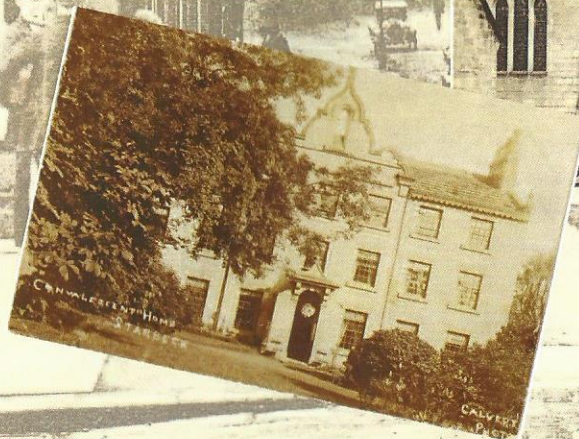
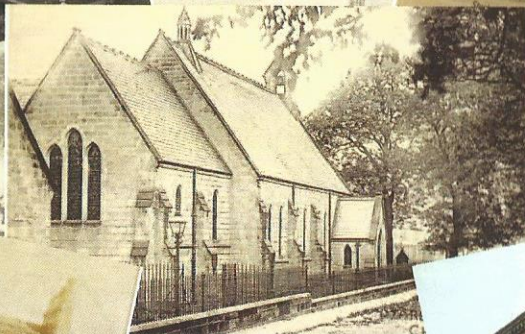
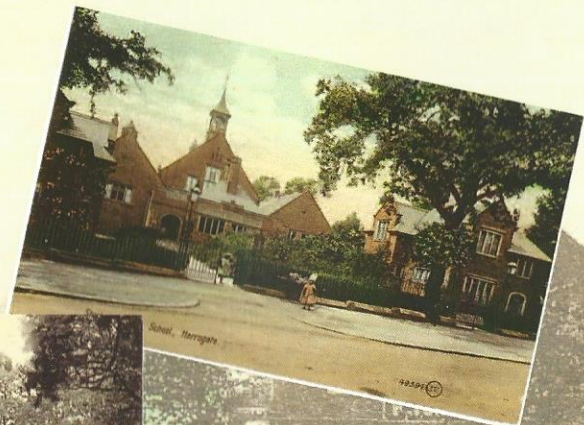
Further down Forest lane we soon pass **(8)** a boundary stone that dates from the enclosure of the Royal Forest of Knaresborough in 1778. Walking further on we see **(9)**, numbers 75 & 77 Forest Lane. These houses were built in 1857 as Charlotte Harrison's Sunday school also serving as a small chapel until St Andrews church was built.

Now head down Forest Lane and along Forest Avenue until we come to **(10)** Starbeck Mission, built in 1910 as The Railway Mission. Now turn down Belmont Terrace and walk through the gateway opposite and round the bowling green to **(11)** the public swimming baths. Built in 1870 as the Prince of Wales Baths these opened in direct competition with the established spa.

Walk now along to the end of Spa Lane and through the archway, we are now at **(12)** Starbeck Old Spa which was discovered during the 17th century and provided both sulphur and chalybeate water treatments until 1890. More information on History board.

Walk back to **(13)** the level crossing. The fine station and goods facilities beyond were demolished in 1978-9. Heading towards Harrogate we pass **(14)** Prospect Park. Take a look at the history board and Gordon Beers sculpture then carry on to Stonefall Avenue where we can view **(15)** Starbeck Hall, which opened in 1811 as the Harrogate Workhouse. Here our journey ends.





HIGH STREET, STARBEC

Printed for Starbeck in Bloom with support from Awards for All
See www.starbeckinbloom.co.uk and www.starbeck-history.co.uk